

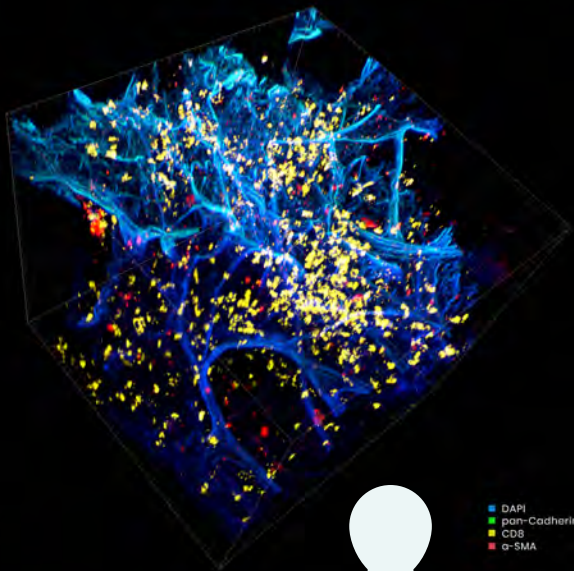
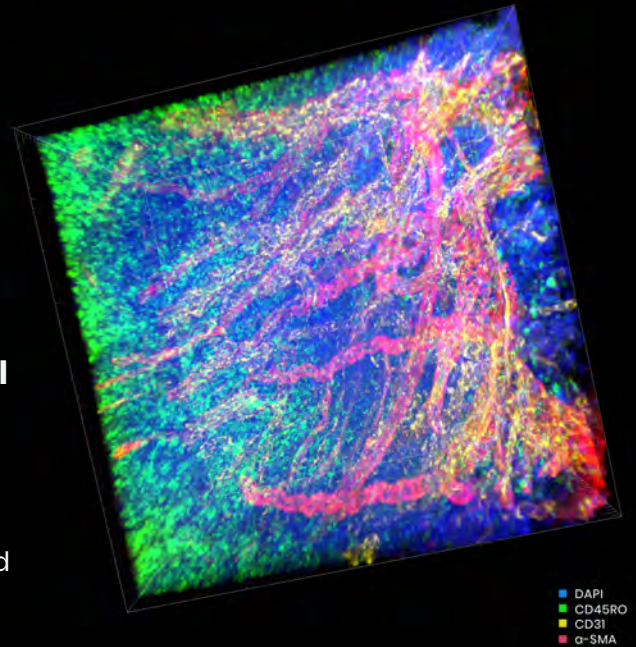


SEE MORE BIOLOGY WITH 3D IHC

Imaging antibodies in 3D reveals novel insights, unobtainable with other technology.

CLARITY Processed and 3D IHC Stained Human Tonsil

An inflamed human tonsil tissue stained with DAPI to clearly identify the individual cell nuclei present within the tissue. Both alpha smooth muscle actin (α -SMA) and CD31 were used to observe possible vasculature with some signal colocalization observed in certain vessels. CD45RO was used as a marker to aid in the identification of regulatory T cells (Tregs).



Gain Insights

into Preclinical Drug Development

Researchers who work with ClearLight begin with a question in mind. The aim is to gain insights for preclinical drug development, e.g., which drug candidates are the least toxic and most effective to advance? ClearLight works with organoids and mouse and human tissues. Researchers gain new insights and pose new research questions. ClearLight's collaborative services support this ongoing iteration. Bring us your burning question.

Concept / Basic Proof
Drug Discovery

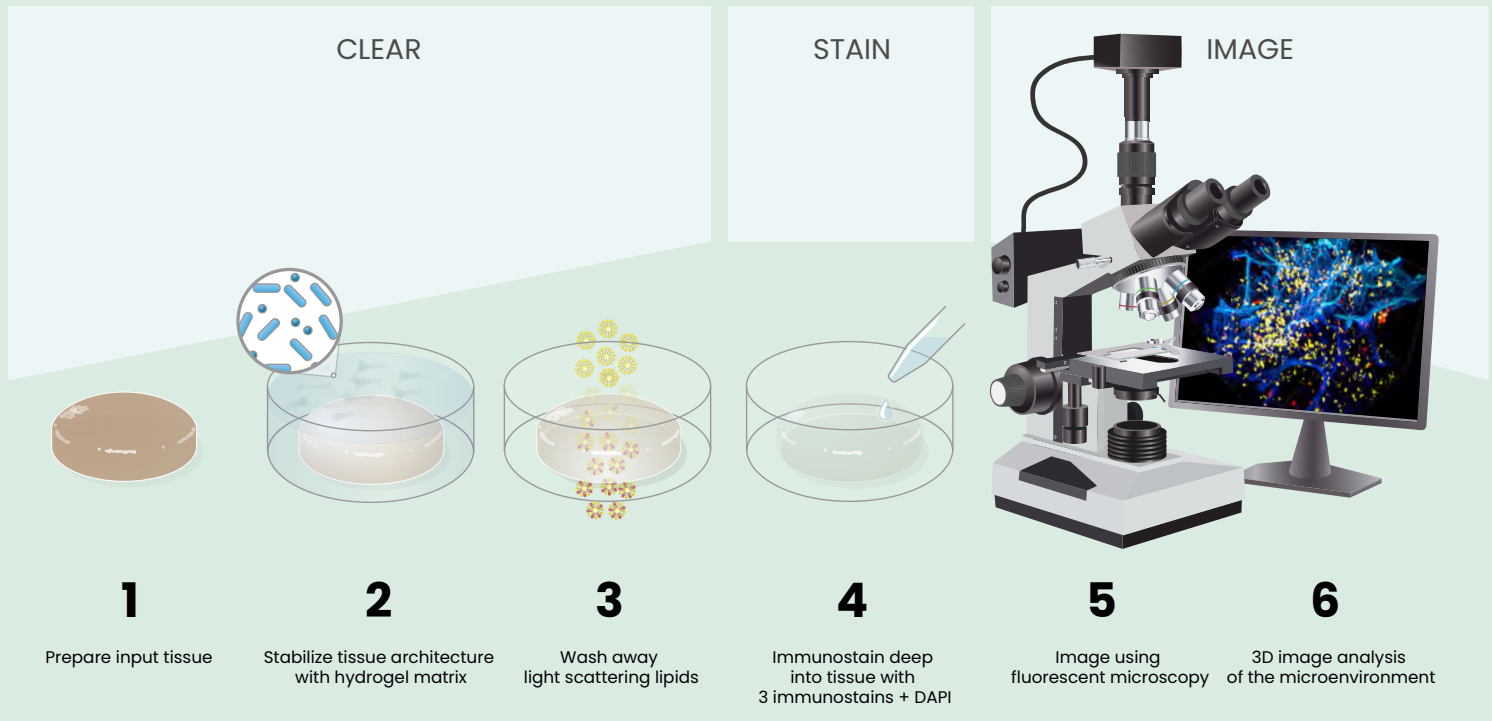
Animal Models
Preclinical Drug Development

Human Research
Clinical Trials - Phase I, II, III

FDA Review
FDA Testing

Specific Research Studies • Narrowing Studies
Combination Studies • Toxicology / Safety Studies

ClearLight Tissue Processing Workflow



ClearLight Provides CLARITY Tissue Clearing and 3D IHC

CLARITY is an acronym for **C**lear **L**ipid-exchanged **A**crylamide-hybridized **R**igid **I**maging / **I**mmunostaining / **i**n situ-hybridization-compatible **T**issue **h**ydrogel)

What is 3D IHC?

- Immunostain deep into CLARITY-cleared tissue (Multiplex with 3 immunostains + DAPI)
- Deep imaging using fluorescent microscopy
- 3D image analysis of microenvironment

Why Collaborate with ClearLight Biotechnologies

- Deep expertise and intellectual property for CLARITY Tissue Clearing
- Experts at thick tissue antibody staining using a library of optimized antibodies
- Tru3D™ Tissue Analysis allows researchers to see more biology than is currently possible with FFPE
- 10x more contiguous and more meaningful data as compared to FFPE slide analysis

ClearLight Mission

ClearLight empowers researchers to see more biology within the tissue microenvironment. We are developing technologies to improve diagnostic, prognostic, and predictive treatment of disease so we can all live healthier lives.

Are You Ready for 3D IHC? Get Started.

ClearLight Biotechnologies, LLC

428 Oakmead Parkway
Sunnyvale, CA 94085

(800) 251-8905

<https://clearlightbiotechnologies.com>

contact@clearlightbiotechnologies.com